

MADE TO REPORT



CeDAR
CEMS software

Configurable Emissions Data Acquisition and Reporting

by **CUSTOM INSTRUMENTATION
SERVICES CORPORATION** **CISCO**



CeDAR CEMS software

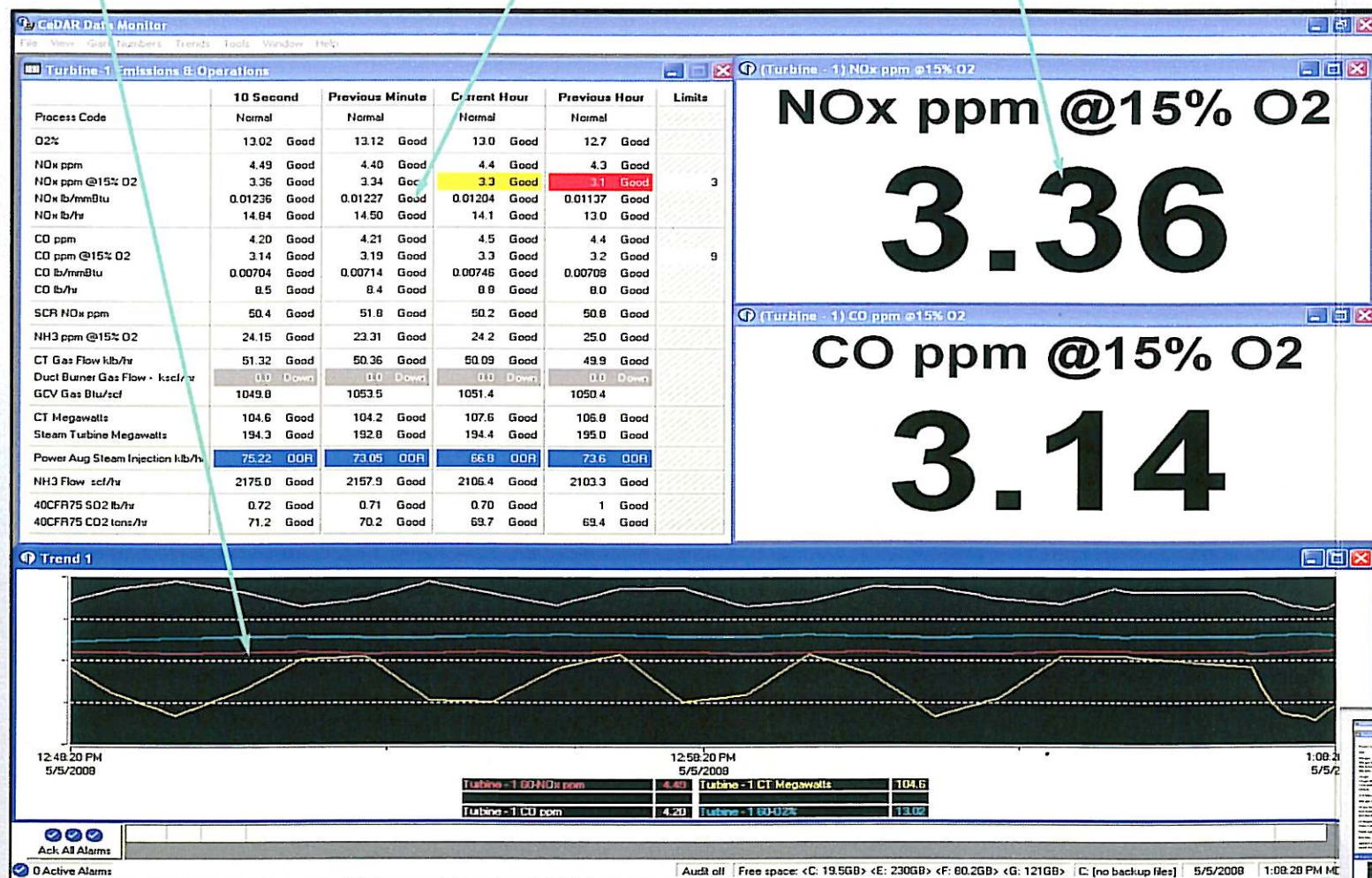
Configurable Emissions Data Acquisition and Reporting

by CUSTOM INSTRUMENTATION
SERVICES CORPORATION 

Trends Screen — graphs real time, historical data and calibration results.

Emission & Operations Table — shows turbine's 10 second, minute and hourly key data.

Giant Numbers Screen — displays critical numerical parameters, for easy viewing — even from across the room.



The CeDAR Solution

CeDAR is your best solution for data acquisition, display, storage and reporting of Continuous Emission Monitoring System (CEMS) data. Since CeDAR's 1998 launch, it has proven to be a highly configurable, user-friendly product, which will meet present and future data acquisition and reporting needs.

CeDAR's applications are broad in scope. Whether you have turbines, incinerators, boilers, smelters or furnaces, CeDAR can handle it. Whether your system is a multi-unit installation with multiple fuels and multiple combustion sources, or a single-fueled source, CeDAR can be configured to meet your needs.

Features/Benefits

- **Broad Scope** — CeDAR manages a wide variety of CEMS/CERMS/COMS data including multiple sources and multiple fuels
- **Completely Configurable** — changes made quickly without need to recompile source code
- **OPC Compliant** — CeDAR can be both a Client & a Server
- **ODBC** — standard database management
- **Federal, State and Local Compliance** — compliant with all federal, state and local air quality regulations
- **Security** — CeDAR has multiple levels of user configurable password protected security
- **Databases** — CeDAR stores end-user editable 1-minute and 1-hour emission and process data, calibration data, user configuration, alarm logs and audit data and automatically backs these databases up to a variety of onboard devices and/or plant storage devices
- **Report Design Wizard** — enables end user to create their own custom reports

- **EPA Electronic Data Reporting (EDR)** — with CeDAR's companion program breez75X, EDRs in the new XML format per EPA's ECMPMS requirement can be created
- **Support** — CISCO supports CeDAR via remote access with either a phone modem or VPN
- **Quality** — CeDAR was created by CISCO — building quality CEM systems has been CISCO's primary business since 1985

CeDAR is Versatile

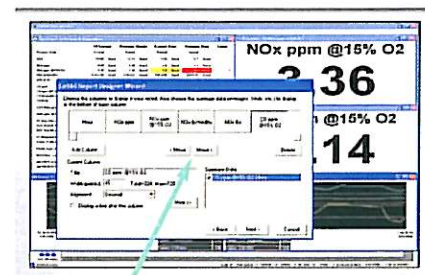
CeDAR offers a wide variety of real-time user interface screens. It is built on a Windows® based platform and allows for multiple screen displays to be open and viewable at the same time. CeDAR can display quantitative numerical data simultaneously with trends, from multiple sources at the same time - in real-time.

CeDAR is expandable. It comes with an array of standard reports and the ability to configure custom reports to meet your individual needs. The Report Design Wizard allows users to design, configure and store their own report designs and formats, as well as use the standard reports, provided with their system.

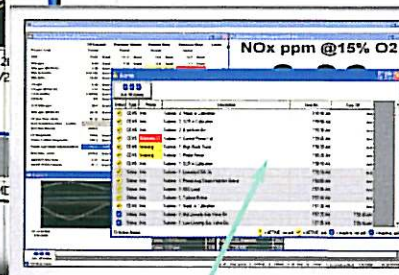
CeDAR has a comprehensive trending package that allows users to graph multiple parameters on a 10-second, one-minute, or hourly basis. CeDAR also can graph calibration results.

CeDAR provides three levels of security to limit access to different parts of the program. Security levels can be tailored to allow all users to change some settings or data, but limit other settings or data editing to only selected users.

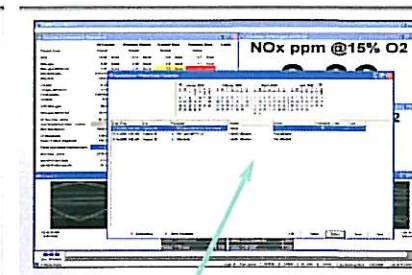
Data can be archived to any mass storage device automatically or manually. Additionally, CeDAR is provided with an easy to use installation program so that if anything ever did go wrong with a DAHS computer, CeDAR can be reinstalled on another computer in minutes.



Report Designer Wizard Screen — facilitates custom design of special reports.



Alarm Log Screen — shows alarm types, when triggered, cleared and acknowledged.



Exceedences, Downtimes, Episodes Screen — shows monthly calendar, with occurrence date in red, for reason and action codes.

CeDAR complies with all federal, state and local (40CFR60, 75, 51, 266 and 503) data acquisition and reporting requirements. It can interface with popular PLCs including Allen-Bradley PLC's, SLC's, Control & CompactLogix, GE 90-30, as well as MODBUS and PI Historian.

Direct Data Entry Capability

CeDAR also provides users the ability to enter CGA/linearity data directly into the database.

Data can be viewed and analyzed. Reports can be printed and data exported to EDR's (or other reporting modules). Data can also be exported to any off the shelf spreadsheet, such as Microsoft Excel®. CiSCO is able to rapidly respond to upcoming needs because CeDAR is written using the latest Microsoft® development tools, making CeDAR's design more flexible and extensible.

The Configurable Advantage

CeDAR provides distinct benefits to the end-user because of its flexible design. When permit requirements change or alterations to the site occur, simply contact CiSCO with your needs. CeDAR's configurable database can be changed to provide the data required for the site reporting needs. CeDAR's flexibility allows these changes to be completed quickly.

Service, Support and Training

Because the best service is service you never need, CiSCO has developed CeDAR to be problem free. If you ever have a problem, a built-in modem or VPN connection allows CiSCO to diagnose and solve problems remotely. CeDAR was designed and built by CiSCO, not third party suppliers. CiSCO's CEMS experience, since 1985, means we build just what customers need today, with the flexibility to expand and change to meet their future needs.

The CeDAR software team teaches CeDAR from the ground up, at your site, or ours. Training is customized to the site's needs. Training can cover the basics of daily operation of the system or also include EDR reporting.

Call for more information!
(303) 790-1000

CeDAR is a product of:

Custom Instrumentation Services Corporation



7325 S. Revere Parkway
Centennial, CO 80112
www.ciscocems.com

Compact & ControlLogix is a trademark of Allen-Bradley Corporation. Microsoft, Windows, Microsoft Excel, Windows 2000, XP and Vista are registered and/or are trademarks of Microsoft Corporation. PI Historian is a trademark of OSI Corporation. Pentium is a registered trademark of Intel Corporation. Trademarks for CeDAR & breez75X are pending for Custom Instrumentation Services Corporation.

Expansion Capabilities

CiSCO makes a continuous effort to satisfy customers with specialized applications. CiSCO satisfies these needs with compatible add-on modules such as breez75X EDR reporting software compatible with ECMPS – aka XML Format. Modules are simple to install and access data already provided by CeDAR.

Federal: breez75X - compatible with ECMPS – aka XML Format EDR

State, Regional:

SCAQMD - RECLAIM

NJDEP - NJEER

PADEP

SJVUAPCD

For instance, breez75X is compatible with the EPA's Emission Collection and Monitoring Plan System (ECMPS), aka XML Format. Designed for a one button EDR, it generates each component - Monitoring Plan, Data and Quality Assurance Check - through accessing CeDAR data, and allows for detailed analysis, as well as user interaction. Linearity data is automatically transferred, RATA data can be imported or entered directly, and fuel-flow-to-load analysis can be accomplished seamlessly. Monitoring Plan, Conflict, and Data Error Checking features makes identifying possible conflicts, well, a breeze.

System Requirements

CeDAR operates on any PC using a Pentium®IV (or newer) CPU with Windows® 2000/XP/Vista operating systems, 1 GB of RAM (2 GB with breez75X).

Warranty

CeDAR software is warranted to be error free. If an error is found, we will fix it at no charge.

Receive More Information

CeDAR CEMS software is your best solution for data acquisition, display, storage and reporting of Continuous Emission Monitoring System (CEMS) data. Call us today to receive more information!

