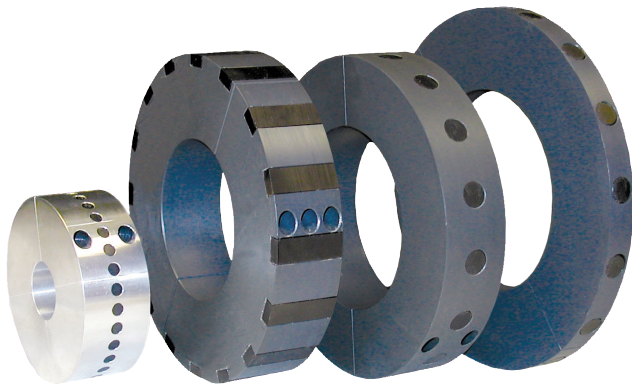


Superior • Systems • Solutions



Split Collar Pulser Wraps

Custom made for your application, built to your specifications

- No machinery tear-down required for mounting
- Five types of wraps fit most applications
- Custom number of pulses per revolution
- PVC, aluminum, or stainless steel
- High temperature wraps available

Product Information

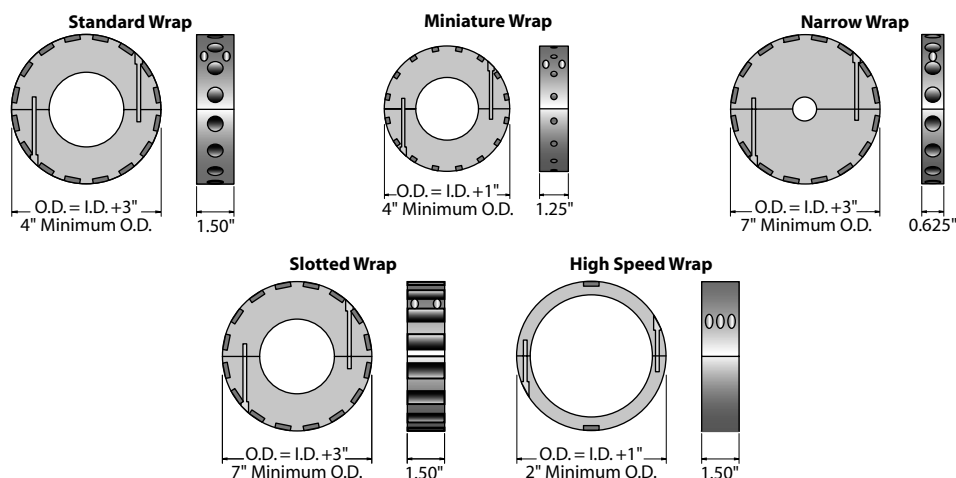
Description

Pulser Wraps are PVC, aluminum, or stainless steel split collars with magnets mounted on the outside circumference. The magnets serve as targets for Hall-Effect and Magnetoresistive sensors that switch when exposed to magnetic fields. All wraps are custom machined to the diameter of the monitored shaft and are split into halves. This splitting process allows the wrap to clamp tightly onto the shaft without tearing down any equipment to install them. The halves are secured around the shaft with recessed Allen-head socket screws supplied. Pulser Wraps provide magnetic targets that are strong enough to allow large gap distances (up to 1/2-inch) between the wrap and the sensor. The wrap and sensor system forgives slight misalignment of the sensor, machinery vibration, dirty, wet, or greasy environments, and shaft end-play.

Special Wraps

Wraps purchased for use with standard Electro-Sensors systems are typically provided with 16 magnets of alternating polarity. Using a standard Hall-Effect sensing system, this provides 8 pulses per revolution from the sensor. Special wraps can be provided to suit particular application requirements. This often includes adding magnets to the wraps to increase the number of pulses per revolution generated by the sensing system. Adding magnets will usually require an increase in the outside diameter of the wrap. Standard and miniature wraps are typically selected when more magnets are required because the magnets may be added without large increases in the outside diameter, particularly if the 1/4" diameter magnets are used. Wraps can be manufactured from PVC, aluminum, or stainless steel, and have the option of a keyway where required. **Steel inserts can be substituted for magnets when using proximity or mag sensors.** An Electro-Sensors Application Specialist can assist in the design of wraps to meet specific or special needs.

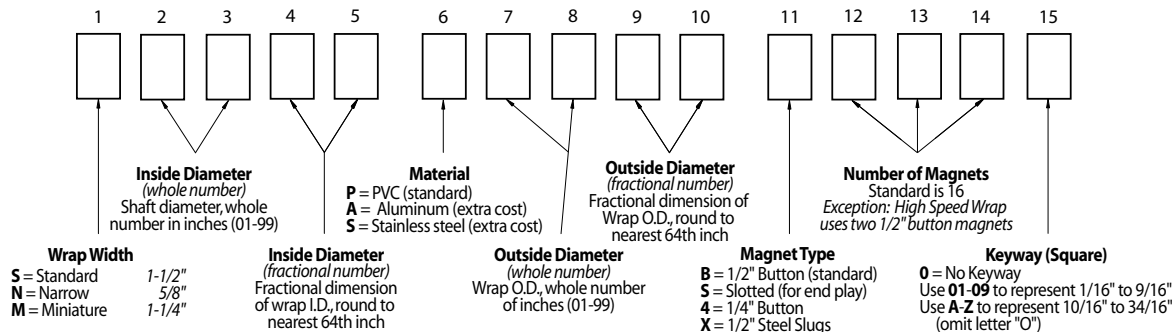
Dimensional Drawings



Installation

Pulser Wraps are custom manufactured to fit the shaft they will be mounted on. When the wrap is shipped, four Allen-head cap screws hold the two halves of the wrap together. These screws must be removed so that the wrap is in two halves. Place the halves around the shaft, reinsert the screws and torque them evenly to 5 foot pounds. After installation, a small gap between the two halves is normal.

**Use the following chart to create a part number for any wrap.
Please state the exact shaft diameter and maximum RPM when ordering.**



Examples

1. Standard PVC Wrap for 3-1/2" shaft, 1,750 RPM, with 16 magnets	Part No. S0332	P0632	B0160
2. Narrow Aluminum Wrap for 1-5/8" shaft, 1,200 RPM, 1/4" keyway, with 16 magnets	Part No. N0140	A0700	B0164
3. High Speed Aluminum Wrap for 6-1/4" shaft, 6,000 RPM, with 2 magnets	Part No. S0616	A0716	B0020
4. Miniature PVC Wrap for 1-1/8" shaft, 3,000 RPM, with max. no. of 1/4" magnets	Part No. M0108	P0400	40310

The formulas below show the maximum number of magnets that can be mounted on the Standard or Miniature Wraps with respect to magnet diameter and the outside diameter of the Wrap.

1/2" Magnets

$$\frac{(\text{Wrap Outside Diameter} - 1/2") \times 3.14}{0.65}$$

1/4" Magnets

$$\frac{(\text{Wrap Outside Diameter} - 1/2") \times 3.14}{0.35}$$

Specifications • Split Collar Pulser Wraps

All Wraps - Temperature Range

PVC Material	60°C max.
Aluminum Material	150°C max.
Stainless Steel	150°C max.

Consult factory for higher temperature ranges.

Wrap Types

Standard - Under 3,000 rpm

Width	1-1/2"
Inside diameter	Custom to shaft size
Outside diameter	I.D. + 3"
Min. outside diameter	4"
Material	PVC std., aluminum optional
Standard magnet size	1/2" diameter
Standard no. of magnets	16 (8 or 16 pulses/revolution)

Miniature - Under 3,000 rpm

Width	1-1/4"
Inside diameter	Custom to shaft size
Outside diameter	I.D. + 1"
Minimum outside diameter	4"
Material	PVC std., aluminum optional
Standard magnet size	1/4" diameter
Standard no. of magnets	16 (8 or 16 pulses/revolution)

Narrow - Under 3,000 rpm

Width	5/8"
Inside diameter	Custom to shaft size
Outside diameter	I.D. + 3"
Minimum outside diameter	7"
Material	PVC std., aluminum optional
Standard magnet size	1/2" diameter
Standard no. of magnets	16 (8 or 16 pulses/revolution)

Slotted - Under 3,000 rpm

Width	1-1/2"
Inside diameter	Custom to shaft size
Outside diameter	I.D. + 3"
Minimum outside diameter	7"
Material	PVC std., aluminum optional
Standard magnet size	1/2" x 1-1/2" bar
Standard no. of magnets	16 (8 or 16 pulses/revolution)

High Speed - Over 3,000 rpm

Width	1-1/2"
Inside diameter	Custom to shaft size
Outside diameter	I.D. + 1"
Minimum outside diameter	2"
Material	Aluminum
Standard magnet size	1/2" diameter
Standard no. of magnets	2 (1 or 2 pulses/revolution)

Specifications subject to change without notice.